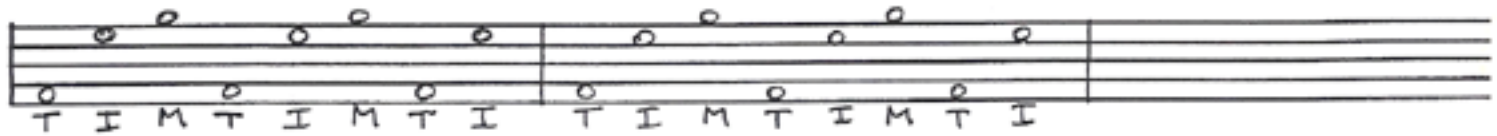


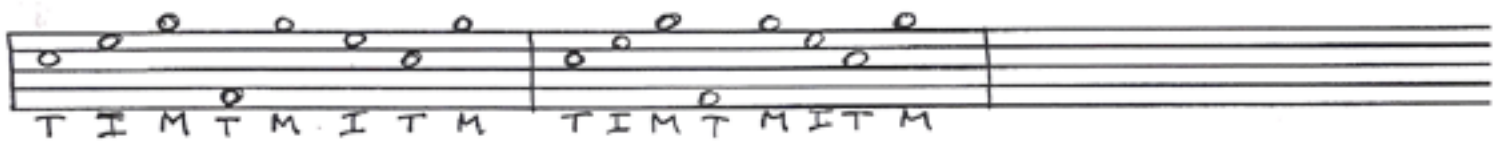
## COMMON ROLL PATTERNS

Several of the basic "roll" patterns are illustrated below. Practicing these patterns as often as possible will develop the right hand dexterity necessary to play tunes. Each measure usually consists of eight 16th notes. The letters below the patterns indicate right hand fingering as follows: T = thumb, I = index finger, M = middle finger.

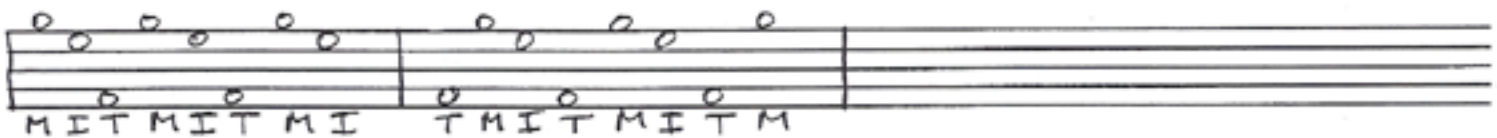
### FORWARD ROLL PATTERN



### REVERSE ROLL PATTERN



### BACKWARD ROLL

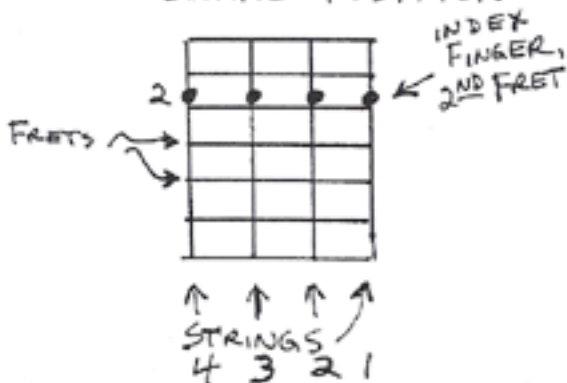


### OTHER PATTERNS

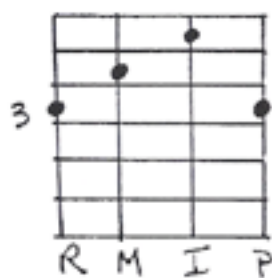


## BASIC CHORD POSITIONS

#### "BARRE" POSITION

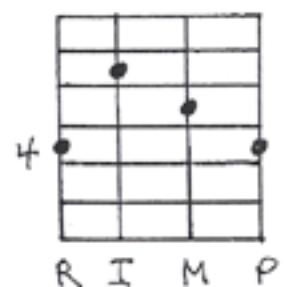


#### "F" POSITION



R = RING FINGER  
M = MIDDLE FINGER

#### "D" POSITION



P = PINKY FINGER  
I = INDEX FINGER